

Adoption of M2M, 2013–2015

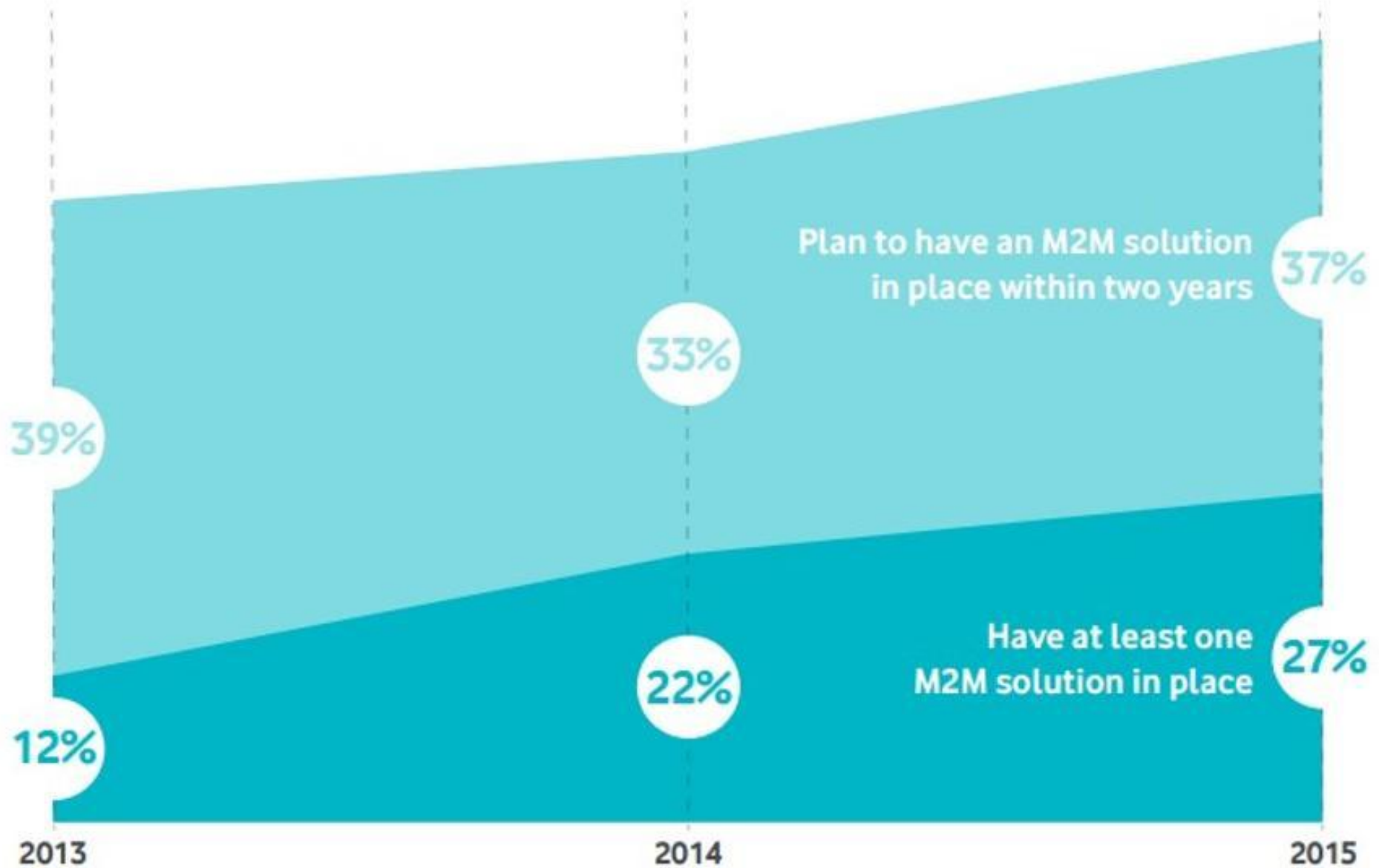


Figure 3: Current M2M adoption is 27%, with 37% more saying they'll adopt within two years

Adoption of M2M by industry, 2013–2015

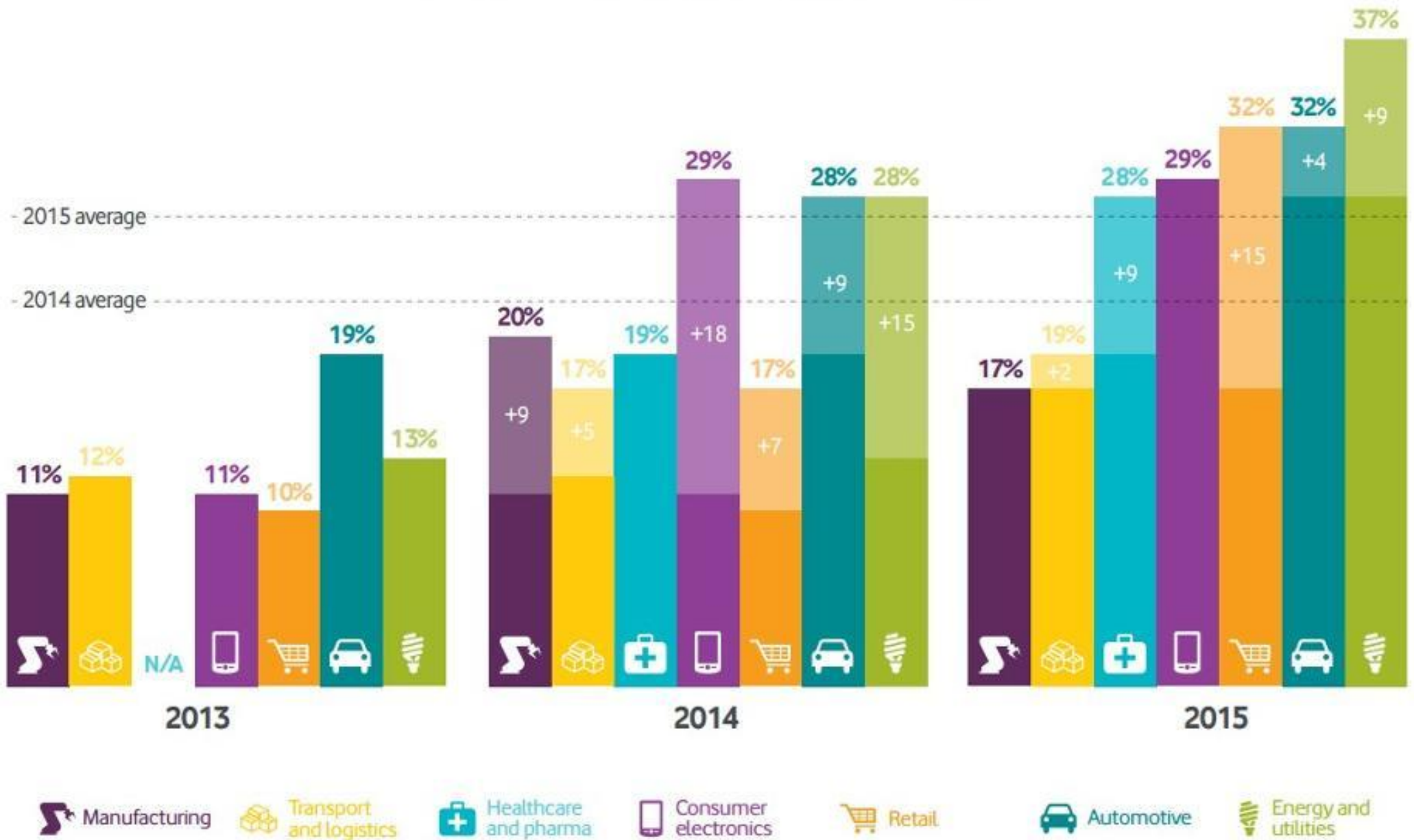


Figure 4: Adoption by industry 2013–2015 shows energy and utilities leading, closely followed by automotive and retail

\$14.4 trillion

```
graph TD; A["$14.4 trillion"] --> B["$9.5 trillion"]; A --> C["$4.9 trillion"]; B --- B_desc["From industry-specific use cases (66%): smart grid, connected commercial vehicles, etc."]; C --- C_desc["From cross-industry use cases (34%): future of work (telecommuting), travel avoidance, etc."];
```

\$9.5 trillion

From industry-specific use cases (66%): smart grid, connected commercial vehicles, etc.

\$4.9 trillion

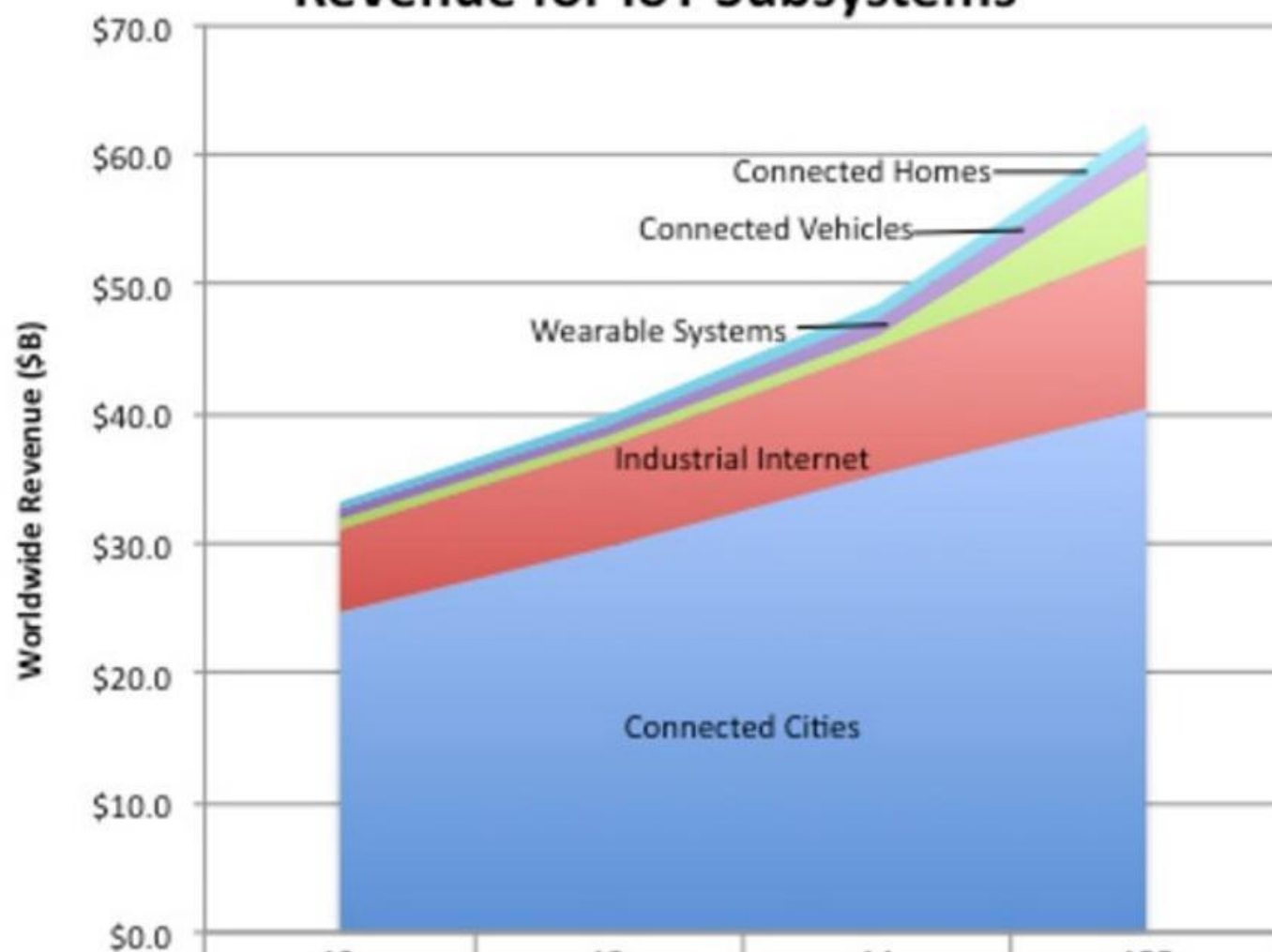
From cross-industry use cases (34%): future of work (telecommuting), travel avoidance, etc.

The Most Active IoT Investors

VCs Ranked by Unique IoT Investments, 2010 - 2015 YTD (11/24/15)

Investor	Rank	Companies																			
Intel Capital	1	AerisScout	Airware	Apia	Ameyent	Angost	BAOS Science	Beacon Ink Network	Body Labs	Bridge Labs	Edgewise	Eyemint	FreedomPop	Gantzen Corporation	Grid Net	Guangdong Appliances	Control Networks	Impinj	Iris	JouleX	
Qualcomm Ventures	2	3D Robotics	Airity Technologies	AlvieCar	Augur	Avah	Concert	Fibit	Health Systems	LFX	LineArise	Obi Wireless	Parasense Power	Pacemaker	Speckch	Sotera	Steris	Steris	Telcare	Way	Whole Labs
Foundry Group	3	3D Robotics	Curium	Dragon Innovation	Fibit	Ivee	Itabits	Loop Labs	Material	OnTheGo Platforms	Orbitas	Pic Digital	Radio	Reviv	Silva	SmartShoe Foot	U-Grok 8				
Kleiner Perkins Caufield & Byers	4	Airware	Dropcam	Edgewise	Control Networks	Iris	Jawbone	Kina	ecube	MODE	Matv	Next Labs	Quiky	Relay	Telaps	Vendim	Wise	Wearable Intelligence			
Andreessen Horowitz	5	Airware	Auti	Automata Labs	giTerra	Halo Neuroscience	FTTT	Jawbone	Leap Motion	Lectron	Oslo	Prism Syllabs	Quiky	Ring	Shapers	Thys	Wearable Intelligence				
Khosla Ventures	5	AlvieCar	Canary	CellScope	Ginger.io	Hellon Systems	Jawbone	Itabits	Mult	Novation Networks	Narrative	ParStream	Quantis	Theatre	Thys	Tile	View				
True Ventures	5	3D Robotics	Alvie Works	Fibit	Ginger.io	Itabits	Material	Narrative	OpenIOV	Ring	Sano Intelligence	Silva	SoundHawk	Steris	Technical Machine	Valencat	Venac				
Cisco Investments	8	AerisScout	Ayla Networks	Bit Now Systems	Colde Wireless	Concert	EVERYTHING	Grid Net	Control Networks	Health Systems	Phoneme	Relay	Security Systems	Smart-FOA	Stereoside	Worthington					
New Enterprise Associates	9	APX Labs	Cul	Glacier Bay	FTTT	Kaazing	Loop Labs	Material	Obi Devices	Orange Chat	Pacemaker	Senseonics	SmartDrive Systems	Topera Medical							
Sequoia Capital	10	Airity Technologies	DI Innovations	eMeter	Jasper Technologies	Jawbone	LFX	Next Labs	Remotive	Singifab	Strava	Synapse	Telcare								
First Round Capital	11	Airware	Electric Objects	Hellon	Nano	Ring	Ringly	SmartThings	Sprouting	Stickybits	Thames Labs	Wearable Intelligence									
SV Angel	11	Electric Objects	Hellon Systems	FTTT	LFX	Lily	Material	Nervana Systems	Nano	Prism Syllabs	Remotive	SmartThings									
CrunchFund	13	Angost	FTTT	Iris	Lars	Obi Device	ParStream	Prism Syllabs	Remotive	SmartThings	Wared										
Felicis Ventures	13	Airware	Cyfy Works	Dropcam	Fibit	Itabits/Kin	Mark One	Hellon	PlotVat	Remotive	Sano Intelligence										

Revenue for IoT Subsystems



	12	13	14	15F
Connected Homes	\$0.6	\$0.7	\$1.0	\$1.4
Connected Vehicles	\$0.8	\$1.0	\$1.4	\$2.0
Wearable Systems	\$0.7	\$0.8	\$1.1	\$6.1
Industrial Internet	\$6.4	\$7.8	\$9.6	\$12.4
Connected Cities	\$24.7	\$29.6	\$35.3	\$40.5

Source: IC Market Drivers 2015 Update

Figure 5. The Top Four Industries Make Up More than Half of the Total Value at Stake.

